

UNICO®



- Centrifuges
- Microscopes
- Colposcopes
- Rockers
- Mixers
- Dispensers
- Lab Accessories

United Products & Instruments, Inc.
www.unicosci.com
800-588-9776



Welcome to the UNICO catalog. Here you will find a collection of products designed and developed for their customer applications, quality, reliability and value. UNICO products are backed by the industry's best warranties and are available from local and national distributors. Ask your supplier for UNICO brand products, or contact us for referral to a distributor.

UNICO was founded in 1991 and has grown steadily thanks to our uncompromising commitment to quality products & service. Our technical and support staff are ready to help you select the best products for your applications. We carry a large inventory and service everything we sell in addition to offering repair and maintenance by factory technicians.

UNICO has 37 field based sales representatives. We recently introduced our new line of FDA Approved ColpoMaster™ Colposcopes and continue to develop accessories

and complementary products. We welcome new product ideas if you have something you would like UNICO to manufacture, please let us know.

UNICO is headquartered in Dayton, New Jersey, USA just outside of Princeton, where our office, warehouse and service center are located. UNICO is open for business Monday – Friday, 8:30 am to 5:30 pm Eastern Standard Time 52 weeks a year. We are closed for certain national holidays. We can be contacted toll free at 800-588-9776, if dialing internationally use 732-274-1155; or e-mail us anytime at info@unicosci.com. Visit our website at www.unicosci.com for additional product information and downloadable brochures.

Copyright United Products and Instruments, Inc. dba UNICO
© Copyright UNICO 2008, all rights reserved

Estimado cliente,

Muchas gracias por su interés en nuestros productos. Este nuevo catálogo incluye todos nuestros productos con excepción de nuestros espectrofotómetros.

Para servicio en español, diríjase directamente a nuestra página Web en donde encontrará folletos de todos nuestros productos, incluyendo nuestros espectrofotómetros, traducidos a nuestro idioma y publicados en formato PDF.

También nos encontramos a vuestra disposición por teléfono al 609-240-5507 o por email a ventas@unicosci.com. Será un placer servirlo.

Table of Contents

	Pages
Centrifuges	3-6
Mixers, Rockers, Shakers	7-8
Phlebotomy, Diff Counters, Dispensers	9
Tube Racks, Dispensers, Carts	10-11
Microscopes:	
Basic Lab Microscopes	12
General Lab Microscopes	13
Med/Vet Advanced Microscopes	14-21
Microscope Accessories	22
Inverted Biological Microscopes	23
Zoom Stereomicroscopes	24-25
ColpoMaster™ Colposcopes	26-28
Lab Accessories:	
Glove and Paper Towel Dispensers	29
Dispensers and Organizers	30
Floor Mats, Chart Holders, Shields, Organizers	31



Model 2800
Scanning UV/Vis
Spectrophotometer

UNICO manufactures a complete line of Visible and UV/Vis Spectrophotometers not shown in this catalog. Please visit our website at www.unicosci.com to see our entire range including Spectrophotometers and accessories, downloadable PDF brochures are available on the site.

PowerSpin™ Centrifuges, Models FX and LX

UNICO® PowerSpin™ Series tabletop centrifuges are compact, economical, reliable and quiet. The UNICO fixed speed PowerSpin™ FX model spins at 3400 RPM, while the variable speed LX spins at 300-4000 RPM, insuring a clean, complete separation of cellular components yielding a superior serum or plasma specimen. The LX models (C856 and C858) meet CLIA recommendations for accurate speed control; it is simply the most economical model on the market to help your lab pass CLIA inspections.

Specifications:

- Standard 6 or 8 place rotor for 2 to 10 ml tubes
- Adapters for 2 ml or 4-7 ml tubes (part # C800-04 & C800-03)
- 0-30 minute timer with bell tone signal
- Quiet at full speed, only 58 decibels
- Latching lid with safety switch triggered to shut-off power to the motor when the lid is opened
- Stainless Steel rotor chamber is easily accessible for cleaning and disinfection
- Maintenance-free brushless motors
- Suction cup rubber feet for stability while reducing vibration
- Lid window for strobe tachometer RPM check
- One Year Limited Warranty

Item No.	Description
C806	FX, 6 Place Fixed Speed Centrifuge, 3400 rpm
C808	FX, 8 Place Fixed Speed Centrifuge, 3400 rpm
C856	LX, 6 Place Variable Speed Centrifuge, 300 - 4000 rpm
C856E	LX, 6 Place, same as above, 220V
C858	LX, 8 Place Variable Speed Centrifuge, 300 - 4000 rpm
C858E	LX, 8 Place, same as above, 220V
C800-01	8 Place Rotor for PowerSpin Centrifuges
C800-02	Tube Shield, Pkg. of 2
C800-03	Short Tube Adapters, for 4-7 ml tubes, Pk/10
C800-04	Small Tube adapters, for 2 ml tubes, Pk/2
C800-10	Fuse for PowerSpin Centrifuges

PowerSpin™ Model	FX C806 / C808		LX C856 / C858	
Rotor radius	102 mm		102 mm	
	RPM	RCF	RPM	RCF
Fecal	N/A		1400	224
Time			10 minutes	
Urine	N/A		2000	456
Time			5 minutes	
Blood	3400	1320	3100/4000	1097/1828
Time	10-15 minutes		10 minutes	

RPM = Revolutions Per Minute

RCF = Relative Centrifugal Force (also known as "G-Force")

Centrifuge RCF Calculation: $RCF = 1.12 \times R(\text{mm}) \times K_{rpm} \times K_{rpm}$

R: Centrifuge rotor radius (mm)

Krpm: Centrifuge speed in thousands

Example: If rotor radius is 102mm, speed is 3.4Krpm (3400rpm), then $RCF = 1.12 \times 102 \times 3.4 \times 3.4 = 1320g$



C856 Model LX Centrifuge

Actual Size: 10.2" x 11.8" x 8"

Shipping Dimension: 13.4" x 14.8" x 10.6"

Net Weight: 15 lbs

Shipping Weight: 18 lbs



C806 Model FX Centrifuge



Tube Holders are "Vertical at Rest" to allow use of Cover Slips for Fecal Protocols.



C8606 Model MX Horizontal Centrifuge

Actual Size: 13.75" x 15" x 11"
Shipping Dimension: 18" x 19" x 15.5"
Net Weight: 31 lbs
Shipping Weight: 36 lbs

Item No.	Description
C8606	MX, 6 Place Horizontal Spin Centrifuge
C8606-01	6 Place Swing Out Rotor
C800-02	Tube Shield, Pkg. of 2
C800-03	Short Tube Adapters, for 4-7 ml tubes, Pk/10
C800-04	Small Tube adapters, for 2 ml tubes, Pk/2
C800-10	Fuse for PowerSpin Centrifuges

PowerSpin™ Centrifuge, HX Horizontal Spin

The horizontal fixed speed PowerSpin™ HX centrifuge spins at 3400 RPM. The horizontal rotor insures a clean, complete separation of cellular components. Using a horizontal rotor for spinning Serum Separator Tubes (SSTs) creates a tight uniform horizontal seal, reducing the risk of red cell leakage and possibility of specimen deterioration.

The C822 features a Zero RPM safety lock, so the lid can not be opened while the rotor is in motion. A digital timer and LCD display provide user with the precise control of the spin cycle. Powerful brushless motor is maintenance free for years of dependable use. Stainless steel guard bowl adds even more protection, and also is easy to clean and maintain.

Specifications:

- Horizontal Six place rotor for 2 to 10 ml tubes
- Quiet at full speed, only 58 decibels
- Stainless Steel chamber for easy cleaning and disinfection
- HX models run at fixed speed 3400 RPM
- 0-99 minute digital timer
- Zero RPM Safety Lid Lock
- Suction cup rubber feet add stability while reducing vibration
- Lid window for strobe tachometer RPM check
- One Year Limited Warranty

PowerSpin™ Centrifuge, MX Horizontal Spin

UNICO is proud to present our powerful 6-place Horizontal Spin centrifuge, the PowerSpin™ MX! The PowerSpin™ MX spins at speeds of 1000 - 3400 RPM, in increments of 100 RPM. Horizontal swing-out rotor provides high G-force and flat separation meniscus line.

The all digital push button front panel makes it easy to select or modify speed and run time even while wearing gloves. The PowerSpin™ MX also features a two line digital display that shows status, time, speed (RPM), and RCF (g).

Each centrifuge is extremely quiet at 50 dB. The rubber shock absorbing suction cup feet hold the unit in place resulting in a quieter run with less vibration. Integrated True Zero RPM Safety System prevents lid from being opened while the rotor is in motion.

Specifications:

- 6 place swing-out horizontal spin rotor for 2 to 15 ml tubes
- Push button panel for convenience when wearing gloves
- Quiet running, only 50 decibels at 3400 RPM (full speed)
- Stainless steel rotor chamber is accessible for easy cleaning
- Easy to read digital display shows real time RPM and RCF readings
- Remembers last setting for quick and easy repeat testing
- Variable Speed, 1000-3400 RPM
- Suction cup rubber feet eliminate vibration
- 60 minute digital timer with tone signal
- Lid window for speed verification with strobe tachometer
- Zero RPM Safety Latching System to prevent lid from being opened while rotor is spinning
- Standard 115V/60Hz AC
- One Year Limited Warranty

C822 Model HX Horizontal Centrifuge



Actual Size: 14.4" x 11.6" x 8.9"
Shipping Dim.: 16.5" x 13" x 10"
Net Weight: 22 lbs
Shipping Weight: 25 lbs

Item No.	Description
C822	HX, 6 Place Horizontal Spin Centrifuge
C822-01	6 Place Swing Out Rotor
C822-02	Tube Shield, Pkg. of 2
C800-03	Short Tube Adapters, for 4-7 ml tubes, Pk/10
C800-04	Small Tube adapters, for 2 ml tubes, Pk/2
C800-10	Fuse for PowerSpin Centrifuges

PowerSpin™ Centrifuge, Model MX

UNICO is proud to present the 24-place PowerSpin™ MX! The PowerSpin™ MX has variable speed 1000 - 3400 RPM, to insure a clean and complete separation of specimen components. Quiet and dependable, with maintenance free brushless motor it can be used to process blood, urine, semen and other specimens.

The all digital push button front panel makes it easy to select speed and run time while wearing gloves. Two line LCD display shows status, time, speed (RPM), and RCF (g).

Precise speed control enables you to comply with CLIA recommendations for specific specimens. Versatile and user friendly PowerSpin™ MX will make an excellent addition to your lab.

Specifications:

- 24 place fixed angle rotor for 2 to 15 ml Tubes
- Holds up to 16, 15ml tubes
- Touch button panel with 2 line LCD display of real time RPM and RCF
- Zero RPM Safety Latching System to prevent lid from being opened while rotor is spinning
- Quiet running, only 50 decibels at 3400 RPM
- 60 minute digital timer with tone signal at the end of your run
- Remembers last setting for quick repeat runs
- Stainless steel rotor chamber for easy cleaning
- Suction cup rubber feet eliminate vibration
- Compact design for most efficient use of space
- Lid window for speed verification with tachometer while containing potential aerosol emissions
- Standard 115V/60Hz AC
- One Year Limited Warranty



Actual Size: 13.75" x 15" x 11"
Shipping Dimension: 18" x 19" x 15.5"
Net Weight: 31 lbs
Shipping Weight: 36 lbs

Item No.	Description
C8624	MX, 24 Place Variable Speed Centrifuge
C800-02	Tube Shield, Pkg. of 2
C800-03	Short Tube Adapters, for 4-7 ml tubes, Pk/10
C800-04	Small Tube adapters, for 2 ml tubes, Pk/2
C800-10	Fuse for PowerSpin Centrifuges

PowerSpin™ Model	HX C822		MX C8624		MX C8606	
Rotor radius	130 mm		135 mm		138 mm	
	RPM	RCF	RPM	RCF	RPM	RCF
Fecal	N/A		1300	260	1300	261
Time			10 minutes		10 minutes	
Urine	N/A		1800	490	1800	490
Time			5 minutes		5 minutes	
Blood	3400	1680	3000-3400	1360-1750	3000-4000	1400-1796
Time	10 minutes		10-15 minutes		10 minutes	

RPM = Revolutions Per Minute

RCF = Relative Centrifugal Force (also known as "G-Force")

Centrifuge RCF Calculation: $RCF = 1.12 \times R(mm) \times Krpm \times Krpm$

R: Centrifuge rotor radius (mm)

Krpm: Centrifuge speed in thousands

Example: If rotor radius is 102mm, speed is 3.4Krpm (3400rpm),
then $RCF = 1.12 \times 102 \times 3.4 \times 3.4 = 1320g$

A. C800-03 Short Tube Adapters

B. C800-04 Small Tube Adapters

Se habla español.
Visitenos en el Internet:
www.unicosci.com/esp
anol o llámenos
por teléfono al
609-240-5507.





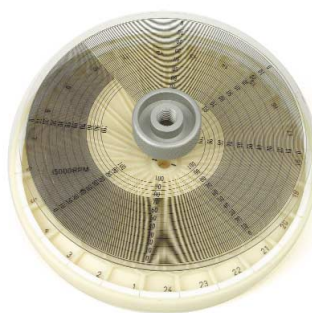
PowerSpin™ Centrifuge, BX

The BX model high speed centrifuge with 3 rotor options is the latest addition to the PowerSpin™ family. Options are Microhematocrit and Micro-Centrifuge 24-place rotors and 6-place Blood/Urine Tube rotor. The state of the art design incorporates advanced safety features like Zero RPM Lid Lock and Auto Unbalance Detection, Rotor Recognition and Shutdown. Large LCD Display provides real time data to the user. With the push of a button you can speed up or slow down the rotor within 1,000 - 13,000 RPM range (Max 6000 RPM with the Blood Tube Rotor). Maintenance free brushless DC motor is powerful and quiet. The cover of the Microhematocrit rotor incorporates a tube reader, allowing for instant reading and eliminating the need for additional specimen handling.

Please note: the C881 6-place rotor will not accept 15 ml urine tubes. It will accept 12 ml urine tubes, see listings to the right.

Specifications:

- Variable speed up to 13000 RPM (up to 6000 RPM on C881)
- Zero RPM Safety Lock and Rotor Unbalance Sensor
- Automatic Rotor recognition
- Digital Timer 0-99 minutes
- Maintenance free brushless motor
- Exterior is chemical resistant and easy to clean and disinfect
- Lid window for strobe tachometer RPM check
- Standard 115V/60Hz; (220V/50Hz option available)
- One Year Limited Warranty



24 place rotor for capillary Microhematocrit tubes. Hematocrit Reader incorporated into the cover



24 place rotor for Micro tubes



6 place Blood/Urine Tube Rotor (accepts maximum 12 ml urine tubes)



BX Model shown with lid closed



Digital LCD display and push button control panel are designed to give the user complete control throughout the spin cycle.

- The "Open" button is disengaged while the rotor is in motion
- LCD mode button will adjust displayed data according to your preferences

Item No.	Description
C881	BX, 6 Place Fixed Angle Centrifuge
C881E	BX, 6 Place, same as above, 220V
C882	BX, 24 Place Hematocrit Centrifuge
C882E	BX, 24 Place Hematocrit, same as above, 220V
C883	BX, 24 Place Micro-Tube Centrifuge
C883E	BX, 24 Place Micro-Tube, same as above, 220V
C881-02	Tube Shield, Pkg. of 2
C881-03	Short Tube Adapters, for 4-7 ml tubes, Pk/10
C881-04	Small Tube adapters, for 2 ml tubes, Pk/2
C800-512	12 ml Conical Urine Tube, 16 x 100 mm, Pk/12
C800-550	12 ml Conical Urine Tube, 16 x 100 mm, Pk/50
C800-500	12 ml Conical Urine Tube, 16 x 100 mm, Pk/500

PowerSpin™ Model	BX C881		BX C882		BX C883	
Rotor radius	92 mm		86 mm		82 mm	
	RPM	RCF	RPM	RCF	RPM	RCF
Fecal	1600	263	N/A		N/A	
Time	10 minutes					
Urine	2000	411	N/A	N/A	2300	485
Time	5 minutes		N/A		5 minutes	
Blood	6000	3703	13,000	16,250	13,000	15,495
Time	4 minutes		5 minutes		5 minutes	

Multi-Purpose Mixer

The UNICO MTR22 Multi-Mix has the capability to perform three modes of mixing, all of which are programmable and can all be used in the same "run". Or, if you just want to rotationally mix, set the unit to rotate. It is very simple to operate and program, runs can be programmed in seconds. You can mix many different sizes of tubes ranging from 1.5 ml to 50 ml with the two interchangeable mixing platforms that come standard with the unit. Tubes are held in-place with unique rubber flexible grippers; that surround and firmly hold tubes of varying diameters.

The MTR22 can mix in the following motions:

1. Rotate 360°, forward or reverse, and forward, then reverse
2. Reciprocating Rocker, back and forth like a traditional rocker
3. Vortex, (cavitate)

Tube Capacity, Two Platforms:

Platform 1: 22 Tubes: 1.5 ml – 15 ml (Installed when new)

Platform 2: Six, 50 ml Tubes and Two 1.5 – 15 ml Tubes
(Included as an accessory)

Easy to use controls to set time, shaking speed, rotation angle, and pauses. Use the Multi-Mixer to mix homogenize samples of all kinds, mix blood samples, urines, injectibles, tissue culture, plasma, hybridization and more. Mix anything that needs to be mixed in a tube. The easy to program unit will be a valued asset in your lab! You can load tubes, program and walk away! Let the mixer do the work for you.



Specifications:

- Capacity:
 - Platform 1: 22 Tubes: 1.5 ml – 15 ml (Installed when new)
 - Platform 2: Six, 50 ml Tubes and Two 1.5 – 15 ml Tubes (Included as an accessory)
- RPM: Variable from 5 – 30 RPM
- Timer: Up to 999 Seconds, max mixing time: 12 hours
- Reciprocating Timer: Up to 999 Seconds
- Rotation Angle in Reciprocation Mode: 15° - 90° (in 15° increments)
- Turning angle vortex mode: 1 to 5
- Vortexing times: 1 to 5
- Maximum timer: 12 hours
- Power: 110 / 220 V
- Dimensions: 13.5" x 7" x 7.5"
- Weight: 6.7 Lbs. / 3 Kgs

Item No.	Description
MTR22	Programmable Multi-Mix Rotator

Vortex Mixers



LVM1000

These economical vortex mixers are rugged and sturdy for your most demanding applications. Dual mode switch lets you vortex continuously or intermittently using the touch mode - simply press your tube to the soft rubber mixing cup. Both model feature speed control to adjust the vortexing velocity to your requirements.

- Powerful and quiet
- Variable speed up to 3000 RPM
- Switch from Auto to Touch mode
- Power On LED indicator
- One year limited warranty



LVM2000

Item No.	Description	Size	Weight
LVM1000	Vortex Mixer, Tube Mixer	6.2" x 5" x 6.5"	9.4 lbs.
LVM2000	Vortex Mixer, Platform/Flask Mixer	6.7" x 5" x 7.5"	9.4 lbs.



Rock-IT Tube Rocker

Actual Size: 13.7" x 4.7" x 5.0"
 Shipping Dimension: 15.7" x 6.7" x 6.9"
 Net Weight: 4.8 lbs
 Shipping Weight: 5.8 lbs

Rock-IT™ Tube Mixers

UNICO models LITR100 and LITR200 Rock-IT Tube Rockers are heavy-duty, yet nearly silent mixers designed for years of everyday use. Smooth and gentle movement at 25 RPM assures a uniform, thoroughly mixed specimen, while preserving the integrity of the fragile blood cells. Get your hematology controls ready to use in no time for accurate results. The reversible non-slip pad is autoclavable and will accommodate larger and hard to mix tubes. Rock-IT's are an economical choice for your lab; let the Rock IT work for you!

- Capacity of 8 or 15 tubes, up to 120 mm long
- 25 rocking cycles per minute, for gentle mixing
- Non-slip, reversible and autoclavable tube pad
- Compact size uses minimal benchtop space
- One year limited warranty

Item No.	Description
LITR100	Rock-IT Jr. Tube Rocker, 8 Place
LITR100E	Rock-IT Jr., same as above, 220V
LITR200	Rock-IT Tube Rocker, 15 Place
LITR200E	Rock-IT, same as above, 220V
LITR100-1	Replacement Tube Pad, 8 Place
LITR200-1	Replacement Tube Pad, 15 Place



Rock-IT Jr. Tube Rocker

Actual Size: 8.6" x 4.7" x 5.0"
 Shipping Dimension: 10.6" x 6.7" x 6.9"
 Net Weight: 4.0 lbs
 Shipping Weight: 5.0 lbs

Platform Lab Rotator



The LRT28 rotator is a compact, durable, variable speed orbital mixer. Accommodates a variety of printed or glass well slides, culture plates, flasks and small test tube racks, as well as RPR and VDRL slides or 96 well plates.

Specifications:

- 11" x 11" mixing plate with removable rubber pad
- Variable speed 25-250 rpm, orbital stroke of 20 mm
- 30 minute timer
- 3 position switch: Constant on/off/timed mixing
- Analog tachometer (adjustable)
- Small flask hold down spring included
- One Year Limited Warranty

Item No.	Description
LRT28	Variable Speed Laboratory Rotator

Shake-It! Lab Pipette Shaker

This type of shaker has been a reliable standard in the laboratory for generations. The 6-position Shake-It! is ideal for use in hematology, for special tests and manual techniques.



Specifications:

- Room for 6 pipettes
- 15 minute timer
- Triple position switch: On/Off/Continuous Use
- Acid/reagent resistant paint finish
- 110V AC
- One Year Limited Warranty

Item No.	Description
LP600T	6-Position Pipette Shaker

Alcohol Dispenser

One-handed operation with our Alcohol Dispensing Pump Bottle; dispense onto pads, cotton balls, gauze, or brushes. Push down pump lid to dispense alcohol; the swing open lid reduces evaporation and odor. Holds 8 oz. alcohol (alcohol not included). Made of HDPE, sold as a case of 12 bottles.



Item No.	Description	UOM	Size
28050	Alcohol Dispenser	CS/12	2.5"W x 2.5"D x 5.75"H

Control Freek™ Control Racks



**1-Tier Rack
28071**



**Single Section
28070**



**2-Tier Rack
28072**

A great help for organizing your control vials, select a ONE, or TWO tier swiveling rack! Each rack comes with four or eight pizza slice shaped removable wedges. The Control Freek allows you to organize controls and calibrator chemicals in a manageable way – each rack swivels like a Lazy Susan for quick access. Each pizza slice is individually colored and can be removed to sit next to a particular analyzer, or can be independently put into a refrigerator, etc. Made of durable, easy to clean acrylic.

Item No.	Description	UOM
28071	Control Freek, 1 Tier Rack	EA
28072	Control Freek, 2 Tier Rack	EA
28070	Control Freek, Single Section	EA



See page 10 for our selection of Tube-CUBE's

Flexi-Phleb Phlebotomy Tray

The Flexi-Phleb has large carrying capacity without bulk. The tray provides a handy pull out drawer that is great for storing needles, bandages and other items. The top level accepts removable Tube-CUBE's (see page 10) that secure a variety of tubes, ice cups for temperature sensitive samples, or sharps containers. Back at the lab, merely exchange your collected samples in Tube-CUBE's at Specimen Processing with empty ones and you are ready to go again! Tray is constructed of tough, durable LDPE for long service and easy cleanup.

Flexi-Phleb includes two 9 place, one 4 place, and one 1 place Tube-CUBE's (sharps and alcohol dispenser not included).

Item No.	Description	UOM	Size
48700	Phlebotomy Tray	EA	9"W x 6"D x 14"H

Differential Counters

UNICO offers the 3 most popular counters: 2 key, 5 key with total window, and 8 key with total window. The 5 and 8 key models are sold with a WBC maturation series picto-strip just above the key windows.

Features:

- Three models: LBC3 - 2 key; LBC6 - 5 key; LBC9 - 8 key
- Heavy duty, impact resistant plastic housing
- Dual reset knobs
- Wide base with rubber feet for stability
- Signal bell when 100 cells have been counted



Item No.	Description
LBC3	2 Key Differential Counter
LBC6	5 Key, One Total Window Differential Counter
LBC9	8 Key, One Total Window Differential Counter



Tube Organizer

Organize your blood drawing supplies in a simple, easy to use rack. See-thru acrylic allows for quick visual inventory, lets you know when to restock.

- Nine compartments to organize and store tubes
- Holds all sizes of tubes, up to 210 tubes
- See-thru for quick sorting by tube type, size or cap
- Designed to wall mount or for use on benchtop
- Constructed of durable 3/16" acrylic

Item No.	Description	UOM	Size
52300	Tube Organizer	EA	11.5"W x 5.5"D x 16"H

Tube-CUBES™



54400



54100



54900

Holds tubes securely, even when turned upside down!



The do-all mini rack! The basis for sample management in any type of laboratory. Available in three configurations that accommodate practically all your needs. Each cube measures 2-7/8"D x 2-5/8"H x 2-7/8"W.

- 4 place, holds 26 mm to 30 mm tubes / 50 ml tubes
- 9 place, holds 8 mm to 16 mm tubes / 10-15 ml tubes
- Single place, holds 66 mm cups, alcohol dispensers, small flasks, etc.

- Invert & Pour! Tubes will stay in place
- Great for phlebotomy trays (see page 9)
- Organize and store samples in refrigerator or freezer

Item No.	Description	UOM
54900	9 place for 8-16 mm tubes	PK/4
54400	4 place for 26-30 mm tubes	PK/4
54100	Single place for up to 66 mm tubes	PK/4



Smooth easy movement saves lab workers from potential lifting related injuries.



Add the optional handle designed to help push, pull and turn your Cubitainer cart.

Cubitainer Carts

Easily transport Cubitainers - no more lifting! Moving cubitainers is almost effortless with our smooth-rolling carts designed for one or two cubitainers. With 3" wheels that rotate 360°, these carts are very maneuverable in tight spaces, or around equipment.

Designed with a 1" lip to contain spills and securely hold cubitainers in place during transport, or over bumps. Built tough, these carts can hold over 250 lbs. Holds one or two standard 20 Liter cubitainers and other materials.

Item No.	Description	UOM	Size
87750	Cubitainer Cart, Single	EA	13"L x 13"W x 5"H
87755	Cubitainer Cart, Double	EA	26.5"L x 13"W x 5"H
87757	Cubitainer Cart Handle	EA	43"L x 2"W x 1"H

Tube-CUBE™ Carriers



2 Carrier



3 Carrier



4 Carrier

Durable acrylic, designed to hold any combination of Tube-CUBE's. Available in 2, 3, and 4 place configurations. Provides a safe, convenient way to carry patient samples in the lab.

Item No.	Description	Size
54020	Tube-CUBE™ Carrier, holds 2	7" x 3.5" x 5.5"
54030	Tube-CUBE™ Carrier, holds 3	9.75" x 3.5" x 5.5"
54040	Tube-CUBE™ Carrier, holds 4	12.75" x 3.5" x 5.5"

T-Racks™ Tube Racks

The top shelf of each T-Rack has cross-referencing Alpha – Numeric designations so you can track the exact location of specific tubes in the rack.



The only rack you will ever need! Starting with a single 50 place T-Rack, you can attach as many racks together as you have room for! These patented racks quickly and easily attach together with their unique built-in T-Connector, which allows you the flexibility to attach one, two, three, or however many racks you decide together!

How do I attach T-Racks together?

It's so easy, even a hospital administrator could do it!

T-Rack's T-Connectors have a positive "click-stop", which locks the racks together, so they will not slide apart while being handled, or moved around the bench top, or refrigerator, etc. This click-stop holds them tightly together, yet is very easy to disassemble as well!

To disassemble, simply slide the racks apart and use as single rack, or join together with other T-Racks.

You can attach 10-13 mm racks to 13-16 mm racks! Attach any configuration to fit your needs! T-Racks allow you the flexibility to select how best to use them in your lab.

T-Racks can be used to help with Accessioning and are a great batching aide.

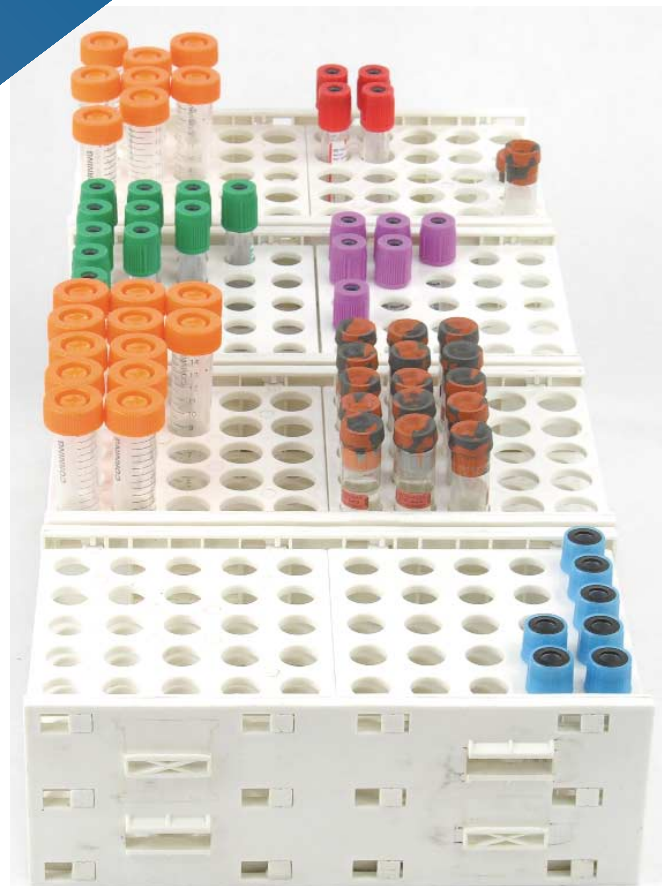
Item No.	Description	UOM
54500	T-Rack 50 Place, 13-16 mm, Expandable	Each
54500-2	T-Rack 50 Place, 13-16 mm, Expandable	Pk/2
54510	T-Rack 50 Place, 10-13 mm, Expandable	Each
54510-2	T-Rack 50 Place, 10-13 mm, Expandable	Pk/2
54520	T-Rack 50 Place, (25 holes of 13-16 mm & 25 of 10-13 mm), Expandable	Each
54520-2	T-Rack 50 Places, (25 holes of 13-16 mm & 25 of 10-13 mm), Expandable	Pk/2

Storage Tray



Organize and store supplies, tube racks (as shown) and more in this three-section, see-thru tray. Great for batching samples and organizing your work flow, or to store materials in the refrigerator, etc. Made of durable 3/16" acrylic.

Item No.	Description	UOM	Size
52030	Storage Tray, 3 Section	EA	12.75"W x 10"D x 3"H



Four T-Racks shown joined together, both 10-13mm and 13-16mm racks are attached. Mix and match to meet your needs, or to help with Accessioning.

Specifications:

- Each T-Rack holds up to 50 tubes of varying sizes in two 25 hole sections
- The top shelf of each T-Rack has cross-referencing Alpha – Numeric designations so you can track the exact location of specific tubes in the rack
- Attach additional T-Racks together, make a single large rack, as big as you need!
- Made of durable, autoclavable polypropylene
- T-Racks will not break, or become brittle in low temperature refrigerators
- Easy to clean and disinfect
- Dimensions: Each 50 Place T-Rack measures: 8.75" x 3.75" x 5.25"
- Your T-Racks will arrive disassembled and snap them together in seconds

Each T-Rack holds up to 50 tubes of varying sizes in two 25 hole sections.





M250

Actual Size: 8.0" x 6.5" x 14.4"
Net Weight: 12.0 lbs
Shipping Weight: 13.0 lbs



M251



M252

M250 General Lab Microscopes

This series offers your choice of corded or portable cordless models. Each corded model uses halogen illumination. Cordless models offer the portability of battery powered LED illumination; includes AC adapter to be plugged in if desired. Your choice of Monocular, Dual-view, or Binocular, all heads rotate 360°. Standard features include achromatic 4, 10, 40 and 100x objectives and 10x widefield eyepieces.

All models include graduated coaxial coarse and fine focus, graduated mechanical stages with low position coaxial controls, and a focusable 1.25 NA Abbe condenser. An Iris Diaphragm, swing-out filter holder and intensity rheostat offer additional lighting control. Cordless models include 3 AA batteries and an AC adapter. All models include dust cover, blue filter, and instruction manual. Five Year Limited Warranty, One Year on electrical system; excludes bulbs and fuses.

220V versions of all M250s available. Contact us for details.

Item No.	Description
M250	Binocular Microscope with Advanced Features
M250LED	Binocular Microscope with Advanced Features, Cordless
M251	Monocular Microscope with Advanced Features
M251LED	Monocular Microscope with Advanced Features, Cordless
M252	Dual Head Microscope with Advanced Features
M252LED	Dual Head Microscope with Advanced Features, Cordless
B6-7006	Halogen Bulb, 6 Volt / 20 Watt



M220LED

Actual Size: 8.5" x 5" x 11.5"
Shipping Dimension: 12" x 8" x 16"
Shipping Weight: 9 lbs

M220 Series Microscopes

With an inclined monocular head that rotates 360°, all models are parfocal and parcentered. Stages are drilled and tapped to accept an optional mechanical stage. Each microscope includes a dust cover and instruction manual. Cordless LED models come with 3 AA batteries installed. Five Year Limited Warranty, One Year on electrical system; excludes bulbs and fuses.



Graduated Mechanical Stage

Specifications

- 10x widefield eyepieces with pointer
- 4x, 10x, 40x Achromatic objectives
- Large stage with locked-on stage clips, drilled to accept add-on mechanical stage
- Separate Coarse and Fine Focus controls
- Built-in NA 0.65 condenser, Five-position disc diaphragm

Item No.	Description
M220FL	Monocular Microscope, Fluorescent Illumination
M220LED	Monocular Microscope, LED Illumination
B2-7003	7 Watt Fluorescent Bulb
B2-5101	Graduated Mechanical Stage, Attachable

	M250	M250LED	M251	M251LED	M252	M252LED	M220FL	M220LED
Head	Binocular	Binocular	Monocular	Monocular	Dual Head	Dual Head	Monocular	Monocular
Eyepiece	10X WF (2)	10X WF (2)	10X WF	10X WF	10X WF (2)	10X WF (2)	10X WF	10X WF
Objectives	4,10,40,100X	4,10,40,100X	4,10,40,100X	4,10,40,100X	4,10,40,100X	4,10,40,100X	4,10,40X	4,10,40X
Condenser	NA 1.25	NA 1.25	NA 1.25	NA 1.25	NA 1.25	NA 1.25	NA 0.65	NA 0.65
Diaphragm	Iris	Iris	Iris	Iris	Iris	Iris	Disc, 5-hole	Disc, 5-hole
Stage	Mechanical	Mechanical	Mechanical	Mechanical	Mechanical	Mechanical	Plain, tapped	Plain, tapped
Illumination	Halogen	Battery/AC	Halogen	Battery/AC	Halogen	Battery/AC	Fluorescent	Battery/AC
Bulb	6 Volt / 20 Watt	LED	6 Volt / 20 Watt	LED	6 Volt / 20 Watt	LED	7 Watt	LED
Focusing	Coaxial	Coaxial	Coaxial	Coaxial	Coaxial	Coaxial	Coarse/Fine	Coarse/Fine

G300 Series Microscopes

Designed for medical and veterinary applications, the G300 Series provides exceptional value in a general laboratory microscope.

Specifications:

- **OPTICS:** All optical surfaces are precisely polished and coated for best resolution and contrast. The DIN standard objectives are parfocal, par centered and color coded
- **OBJECTIVES:** Select Achromatic, Semi-plan or Plan objectives 4X 10X 40X and 100X Oil
- **HEADS:** Precise monocular, binocular and trinocular heads all rotate 360 degrees
- **STANDS:** Ruggedly constructed all metal stand features low position coaxial coarse and fine focusing mechanism with tension control and safety stop. Precentered Abbe condenser NA 1.25 with iris diaphragm and filter holder
- **MECHANICAL STAGE:** Graduated mechanical stage with ball bearing movement and low coaxial controls. It is 125mm x 130mm in size and has X-Y travel of 30mm x 60mm with graduation of 0.1mm
- **ILLUMINATION:** The 6 Volt / 20 Watt halogen lamp assembly with brightness intensity control assures steady, even illumination
- Complete with dust cover, blue filter, and operation manual
- Five Year Limited Warranty, One Year on electrical system; excludes bulbs and fuses
- 220V versions available. Contact us for details



G304

Actual Size: 7.0" x 6.5" x 15.0"
Shipping Dimension: 10.6" x 9.2" x 16.6"
Shipping Weight: 14 lbs



Monocular head

Trinocular head (shown here with the optional C-mount camera adapter)

Item No.	Description
G301	Monocular General Lab Microscope, Achromat
G301PL	Monocular General Lab Microscope, Plan
G304	Binocular General Lab Microscope, Achromat
G304SP	Binocular General Lab Microscope, Semi-Plan
G304PL	Binocular General Lab Microscope, Plan
G305	Trinocular General Lab Microscope, Achromat
G305SP	Trinocular General Lab Microscope, Semi-Plan
G305PL	Trinocular General Lab Microscope, Plan
B6-8010	Camera Adapter with T-Mount (for Trinocular models)
B6-8020	Video Adapter with C-Mount (for Trinocular models)
B6-8031	40X Semi-Plan Phase Kit
B6-8901	Eyepiece Reticule with 0.1 mm Divisions
B6-7006	6 Volt / 20 Watt Halogen Bulb, 4mm Pin
B6-7008	Fuse, 0.75A

	G301	G301PL	G304	G304SP	G304PL	G305	G305SP	G305PL
Head	Monocular	Monocular	Binocular	Binocular	Binocular	Trinocular	Trinocular	Trinocular
Eyepiece	10X WF	10X WF	10X WF(2)	10X WF(2)	10X WF(2)	10X WF(2)	10X WF(2)	10X WF(2)
Objectives	4,10,40,100X Achromat	4,10,40,100X Plan	4,10,40,100X Achromat	4,10,40,100X Semi-Plan	4,10,40,100X Plan	4,10,40,100X Achromat	4,10,40,100X Semi-Plan	4,10,40,100X Plan
Condenser	NA 1.25	NA 1.25	NA 1.25	NA 1.25	NA 1.25	NA 1.25	NA 1.25	NA 1.25
Diaphragm	Iris	Iris	Iris	Iris	Iris	Iris	Iris	Iris
Stage	Mechanical	Mechanical	Mechanical	Mechanical	Mechanical	Mechanical	Mechanical	Mechanical
Illumination	Halogen	Halogen	Halogen	Halogen	Halogen	Halogen	Halogen	Halogen
Bulb	6 Volt/20 Watt	6 Volt/20 Watt	6 Volt/20 Watt	6 Volt/20 Watt	6 Volt/20 Watt	6 Volt/20 Watt	6 Volt/100 Watt	6 Volt/100 Watt
Focusing	Coaxial	Coaxial	Coaxial	Coaxial	Coaxial	Coaxial	Coaxial	Coaxial

G380 Series Microscopes



See our portable battery-operated LED illuminator option on page 16

Actual Size: 9.5" x 7.5" x 16.0"
Shipping Dimension: 13.5" x 10.5" x 17.5"
Net Weight: 14.0 lbs
Shipping Weight: 18.0 lbs

The G380 combines state of the art design and features with the latest optical coating technologies for crisp, clear imaging on a versatile and ergonomic platform. All models in the G380 series feature "High-Eyepoint" 10x widefield eyepieces. This unique design allows users wearing glasses to comfortably view through the scope without removing their glasses as they would have to with traditional eyepieces.

Available with your choice of Monocular, Dual-View, Binocular, or Trinocular heads, all of which rotate 360°. Select from standard Achromat, Semi-Plan, or flat-field Plan achromat objectives.

Includes a focusable 1.25 NA Abbe condenser with Iris Diaphragm, oversized graduated coaxial coarse and fine focus controls, swing-out filter holder and a port to allow insertion of a Phase Annulus for Phase microscopy. A ball-bearing movement mechanical stage is also standard with low position coaxial controls.

Halogen illumination with intensity rheostat allows bright clear imaging and effective contrast control. Features an integrated dual voltage transformer (110V and 220V) and a detachable power cord so you can use this scope anywhere in the world.

Item No.	Description
G380	Binocular Microscope with Achromat Objectives
G380SP	Binocular Microscope with Semi-Plan Objectives
G380PL	Binocular Microscope with Plan Objectives
G381	Monocular Microscope with Achromat Objectives
G381SP	Monocular Microscope with Semi-Plan Objectives
G381PL	Monocular Microscope with Plan Objectives
G382	Dual Head Microscope with Achromat Objectives
G382SP	Dual Head Microscope with Semi-Plan Objectives
G382PL	Dual Head Microscope with Plan Objectives
G383	Trinocular Microscope with Achromat Objectives
G383SP	Trinocular Microscope with Semi-Plan Objectives
G383PL	Trinocular Microscope with Plan Objectives
G380-8010	Camera Adapter with T-Mount (Trinoc models)
G380-8020	Video Adapter with C-Mount (Trinoc models)
B6-7006	Halogen Bulb, 6 Volt / 20 Watt
B6-9005	Fuse, 1.5A, 250V
G380-8031	40X Semi-Plan Phase Objective & Slide-In Annulus
B6-8910	Optical Cleaning Kit

	G380	G380SP	G380PL	G381	G381SP	G381PL
Head	Binocular	Binocular	Binocular	Monocular	Monocular	Monocular
Eyepiece	10X WF(2)Hi-EP	10X WF(2)Hi-EP	10X WF(2)Hi-EP	10X WF Hi-EP	10X WF Hi-EP	10X WF Hi-EP
Objectives	4, 10, 40, 100X	4, 10, 40, 100X	4, 10, 40, 100X	4, 10, 40, 100X	4, 10, 40, 100X	4, 10, 40, 100X
	Achromat	Semi-Plan	Plan	Achromat	Semi-Plan	Plan
Condenser	NA 1.25	NA 1.25	NA 1.25	NA 1.25	NA 1.25	NA 1.25
Diaphragm	Iris	Iris	Iris	Iris	Iris	Iris
Stage	Mechanical	Mechanical	Mechanical	Mechanical	Mechanical	Mechanical
Illumination	Halogen	Halogen	Halogen	Halogen	Halogen	Halogen
Bulb	6 Volt/20 Watt	6 Volt/20 Watt	6 Volt/20 Watt	6 Volt/20 Watt	6 Volt/20 Watt	6 Volt/20 Watt
Focusing	Coaxial	Coaxial	Coaxial	Coaxial	Coaxial	Coaxial



G381 with Monocular Head



G383 with Trinocular Head
(shown with optional C-mount camera adapter)



G382 with Dual Head

Specifications:

- **HEADS:** Available with Monocular, Binocular, Dual View or Trinocular heads with 52 – 75 mm interpupillary distance adjustment. All rotate 360°, and lock in-place with a thumbscrew
- **EYEPIECES:** Standard with 10x "High-Eyepoint" widefield oculars designed to improve viewing while wearing glasses. Reticules and Pointers available on request
- **OBJECTIVES:** All models feature DIN Standard 4x, 10x, 40xR and 100xR objectives. 40 and 100x objectives are "R", or Retractable. Options are: Achromat, Semi-Plan, or Plan Achromats. Simple Phase Contrast is available in 40x
- **OBJECTIVE Numerical Aperture:**
 4x = NA 0.10 10x = NA 0.25
 40x = NA 0.65 100x = NA 1.25
- **MAGNIFICATION:** With 10x eyepieces, standard magnification is 40x, 100x, 400x and 1,000x (Oil Immersion)
- **CONDENSER:** Features a focusable NA 1.25 Abbe condenser with port for optional Simple Phase Contrast Annulus insertion. Focusable with rack and pinion movement
- **STAND and Nosepiece:** Sturdy cast metal frame with polymer accent panels, designed to provide stability
- **STAGE:** Built-in Graduated Mechanical Stage with low-position coaxial X-Y controls. Ball bearing movement allows for smooth, precise adjustments. Stage size: 142 mm x 132 mm. Range of X-Y stage movement: 55 mm x 75 mm. Spring loaded slide holder
- **IRIS DIAPHRAGM:** Features adjustable Iris with metal leaf overlay design. Optical design allows for Blue and other filters to be mounted in the illuminator housing
- **FOCUSING:** Features smooth, extra-large graduated coaxial coarse and fine focus controls with tension adjustment to eliminate stage drift. Adjustable to your personal preferences
- **ILLUMINATION:** 6 Volt / 20 Watt Halogen light source standard, optional LED battery pack illuminator is available. Variable intensity rheostat wheel is located on the left side of the base
- **ELECTRICAL:** 110V- 60 Hz to 240V- 50 Hz, universal power supply. The fuse rating is 250V 1.5A
- Complete with dust cover, blue filter, two extra fuses and operation manual
- Five Year Limited Warranty, One Year on electrical system; excludes bulbs and fuses

	G382	G382SP	G382PL	G383	G383SP	G383PL
Head	Dual Head	Dual Head	Dual Head	Trinocular	Trinocular	Trinocular
Eyepiece	10X WF(2)Hi-EP	10X WF(2)Hi-EP	10X WF(2)Hi-EP	10X WF(2)Hi-EP	10X WF(2)Hi-EP	10X WF(2)Hi-EP
Objectives	4,10,40,100X	4,10,40,100X	4,10,40,100X	4,10,40,100X	4,10,40,100X	4,10,40,100X
	Achromat	Semi-Plan	Plan	Achromat	Semi-Plan	Plan
Condenser	NA 1.25	NA 1.25	NA 1.25	NA 1.25	NA 1.25	NA 1.25
Diaphragm	Iris	Iris	Iris	Iris	Iris	Iris
Stage	Mechanical	Mechanical	Mechanical	Mechanical	Mechanical	Mechanical
Illumination	Halogen	Halogen	Halogen	Halogen	Halogen	Halogen
Bulb	6 Volt/20 Watt	6 Volt/20 Watt	6 Volt/20 Watt	6 Volt/20 Watt	6 Volt/20 Watt	6 Volt/20 Watt
Focusing	Coaxial	Coaxial	Coaxial	Coaxial	Coaxial	Coaxial



**G380-8907
Metal Carrying Case**

Our Metal Carrying Case is custom-designed to fit your G380 Series microscope. With foam-lined protection, it even has extra storage space for your optional LED illuminator and Semi-Plan Phase Kit. Perfect for a mobile practitioner. Complete with handle, lock and two keys.

G380 Microscope Accessories

Here is a selection of some of the most commonly used accessories for the G380 Series. We inventory an extensive line of additional parts and accessories not shown here due to space limitations. If you do not see what you want or need, please contact us for more information (also see page 22 for more listings).

Item No.	Description
G380-7001	G380 Series LED Battery Powered Illuminator (includes 3 AA batteries)
G380-7002	G380 Series Mirror Attachment
B6-2308	50X Oil Plan Objective
G380-8031	40X Semi-Plan Phase Objective and Slide-In Annulus
G380-8906	Darkfield Stop for G380 Series
B6-6010	Blue Filter, 31.5mm
B6-6011	Green Filter, 31.5mm
B6-6012	Yellow Filter, 31.5 mm
B6-8901	Eyeiece Reticule, 0.1mm divisions
B6-8903	Stage Micrometer Slide, 1mm in 0.01mm divisions
B6-8905	Immersion Oil, 7 ml
B6-7006	Halogen Bulb, 6V 20 Watt
B6-9005	Fuse, 1.5A, 250V
G380-8907	Metal Carrying Case for G380 Series



**G380-7001
LED Illuminator**

The LED Illuminator quickly turns your G380 into a cordless portable battery-operated field microscope. Includes 3 AA batteries. Installing the LED Illuminator is so easy, you can do it within 30 seconds. Works with any G380 Series microscope.



**G380-7002
Mirror Attachment**

Attaches to any G380 Series microscope. Quick and easy to install.



Optical Cleaning Kit

This kit is designed to protect and maintain one of the most valued assets in your laboratory. It has everything you need to take care of your microscope optics.

Includes:

- Blow Brush used to remove dust from lens surfaces
- Multi-coated formula Lens Cleaner
- Premium grade Lens Cleaning Tissue
- Micro-fiber Cloth
- Place Mats for eyepieces
- Carrying Case
- Detailed instructions

Item No.	Description
B6-8910	Optical Cleaning Kit



**G380-8031
SP Phase Kit**

Quickly turn your G380 Series microscope into a Phase Contrast microscope with our 40x Semi-Plan Phase Kit. Includes 40x Semi-Plan Phase Objective and Slide-in Annulus.

Did you know that UNICO services and maintains microscopes? Contact us for more details.

G380 Infinity Microscopes



G386 Infinity

Infinity Optics take the G380 Series to the next level of microscopy. Designed to offer superior imaging with 10X High Eye-Point eyepieces engineered to reduce eyestrain for users wearing glasses and crisp Infinity objectives (Achromat or Plan). Each eye tube features an independent focusing diopter. Oversized coarse and fine focus controls and low-position coaxial mechanical stage controls.

The New G388 Dual-Binocular Head Infinity microscope is an excellent tool for instruction, or conferring with a colleague. It will increase your productivity and confidence in results.

Specifications:

- **HEADS:** Available with Binocular or DUAL Binocular heads with 52 – 75 mm interpupillary distance adjustment. All rotate 360°, and lock in-place with a thumbscrew
- **EYEPIECES:** Standard with 10x "High-Eyepoint" extra-widefield oculars. Reticules and Pointers available on request
- **OBJECTIVES:** Featuring Infinity Optics, Achromat or Plan, 4x, 10x, 40xR and 100xR objectives. 40 and 100x objectives are "R", or Retractable. 100x is an Oil Immersion objective
- **OBJECTIVE Numerical Aperture:**
 4x = NA 0.10 10x = NA 0.25
 40x = NA 0.65 100x = NA 1.25
- **CONDENSER:** Features a focusable NA 1.25 Abbe condenser. Focusable with rack and pinion movement
- **STAGE:** Built-in Graduated Mechanical Stage with low-position coaxial X-Y controls. Ball bearing movement allows for smooth, precise adjustments. Stage size: 142 mm x 132 mm. Range of X-Y stage movement: 55 mm x 75 mm. Spring loaded slide holder

Item No.	Description
G386	Binocular Infinity Achromat Microscope
G386	Binocular Infinity Plan Microscope
G388	Dual Binocular Infinity Achromat Microscope
G388PL	Dual Binocular Infinity Plan Microscope
B6-7006	Halogen Bulb, 6 Volt / 20 Watt



**G388 Dual Binocular Head
Infinity Optics Microscope**

- **IRIS DIAPHRAGM:** Features adjustable Iris with metal leaf overlay design. Optical design allows for Blue and other filters to be mounted in the illuminator housing
- **FOCUSING:** Features smooth, extra-large graduated coaxial coarse and fine focus controls with tension adjustment to eliminate stage drift. Adjustable to your personal preferences
- **ILLUMINATION:** 6 Volt / 20 Watt Halogen light source standard, optional LED battery pack illuminator is available. Variable intensity rheostat wheel is located on the left side of the base
- **ELECTRICAL:** 110V- 60 Hz to 240V- 50 Hz, universal power supply. The fuse rating is 250V 1.5A
- Complete with dust cover, blue filter, two extra fuses and operation manual
- Five Year Limited Warranty, One Year on electrical system; excludes bulbs and fuses

	G386	G386PL	G388	G388PL
Head	Binocular	Binocular	Dual-Binocular	Dual-Binocular
Eyepiece	10X WF(2)Hi-EP	10X WF(2)Hi-EP	10X WF(4)Hi-EP	10X WF(4)Hi-EP
Objectives	4,10,40,100X Infinity Achromat	4,10,40,100X Infinity Plan	4,10,40,100X Infinity Achromat	4,10,40,100X Infinity Plan
Condenser	NA 1.25	NA 1.25	NA 1.25	NA 1.25
Diaphragm	Iris	Iris	Iris	Iris
Stage	Mechanical	Mechanical	Mechanical	Mechanical
Illumination	Halogen	Halogen	Halogen	Halogen
Bulb	6 Volt/20 Watt	6 Volt/20 Watt	6 Volt/20 Watt	6 Volt/20 Watt
Focusing	Coaxial	Coaxial	Coaxial	Coaxial

H600 Microscopes

The H600 is a fully expandable platform with Koehler illumination that gives you the capability to do standard Brightfield, Full-Phase Contrast, Digital, Video, Darkfield, Polarized and Epi-Fluorescence microscopy, all with the same microscope.

The H600 is perfect for the research or clinical setting; designed for discerning users requiring many optional accessories and complete control over lighting and contrast for optimal clarity and resolution. The five hole nosepiece allows you the versatility of adding an extra specialized objective to meet your needs.

Standard 10x widefield High Eyepoint eyepieces are complemented with a comprehensive selection of objectives includes: Achromats, Semi-Plan, Plan and Semi-Plan Phase. Select from 4x, 10x, 20x, 25x, 40x, 50x Oil, 60x Dry, and 100x Oil.

Select from Binocular or Trinocular head models. A powerful Halogen illuminator provides steady bright white light with a Koehler field iris for maximum lighting and contrast control.

Each H600 comes standard with a dust cover, manual, blue filter, and extra fuse.

Five Year Limited Warranty, One Year on electrical system; excludes bulbs and fuses.

Specifications:

- Binocular or Trinocular heads
- High Eyepoint 10x widefield eyepieces with diopter adjustment
- Five hole nosepiece, reverse position
- 4x, 10x, 40x and 100x DIN objectives
- Coaxial Coarse and Fine Focus controls
- Low position coaxial mechanical stage controls
- NA 1.25 Abbe condenser with Iris Diaphragm and filter holder
- Optional Phase Contrast and Polarizing accessories available
- Halogen illumination with Koehler field iris
- Illumination intensity rheostat
- 220V versions available. Contact us for details



Reverse position
5-hole nosepiece.

H604

Actual Size: 7.5" x 9.5" x 16.0"
Shipping Dimension: 14.0" x 10.75" x 17.5"
Net Weight: 16.0 lbs
Shipping Weight: 18.0 lbs

Item No.	Description
H602	Binocular, Achromat Advanced Microscope
H602T	Trinocular, Achromat Advanced Microscope
H603	Binocular, Semi-Plan Advanced Microscope
H603T	Trinocular, Semi-Plan Advanced Microscope
H604	Binocular, Plan Advanced Microscope
H604T	Trinocular, Plan Advanced Microscope
B6-7006	Halogen Bulb, 6 Volt / 20 Watt

	H602	H602T	H603	H603T	H604	H604T
Head	Binocular	Trinocular	Binocular	Trinocular	Binocular	Trinocular
Eyepiece	10X WF(2)Hi-EP	10X WF(2)Hi-EP	10X WF(2)Hi-EP	10X WF(2)Hi-EP	10X WF(2)Hi-EP	10X WF(2)Hi-EP
Objectives	4,10,40,100X Achromat	4,10,40,100X Achromat	4,10,40,100X Semi-Plan	4,10,40,100X Semi-Plan	4,10,40,100X Plan	4,10,40,100X Plan
Condenser	NA 1.25	NA 1.25	NA 1.25	NA 1.25	NA 1.25	NA 1.25
Diaphragm	Iris	Iris	Iris	Iris	Iris	Iris
Stage	Mechanical	Mechanical	Mechanical	Mechanical	Mechanical	Mechanical
Illumination	Halogen Koehler - Iris	Halogen Koehler - Iris	Halogen Koehler - Iris	Halogen Koehler - Iris	Halogen Koehler - Iris	Halogen Koehler - Iris
Bulb	6 Volt/20 Watt	6 Volt/20 Watt	6 Volt/20 Watt	6 Volt/20 Watt	6 Volt/20 Watt	6 Volt/20 Watt
Focusing	Coaxial	Coaxial	Coaxial	Coaxial	Coaxial	Coaxial

H606 Epi-Fluorescence Microscope



Built on our H600 Series frame, the H606 Epi-Fluorescence Microscope is a versatile addition to your lab. The Kit comes complete with Epi-Fluorescence objectives (25x, 40x, & 100x), high-power light source with 100 watt, mercury bulb and filters, designed for all fluorescence applications.

In addition, you will receive a complete set of standard Semi-Plan brightfield objectives 4x, 10x, 40x & 100x; allowing you to do all the standard brightfield microscopy applications. Includes dust cover, blue, green & yellow filters, extra fuse and a manual. Five year limited warranty, one year on electrical system, excludes bulbs & fuses.

Item No.	Description
H605	Binocular, Phase Contrast
H605T	Trinocular, Phase Contrast
H606	Binocular, with Epi-Fluorescence Kit
H606T	Trinocular, with Epi-Fluorescence Kit
H607	Binocular, Hematology/Oncology with 50X, Plan
H607T	Trinocular, Hematology/Oncology with 50X, Plan
H608	Binocular, Polarizing with Red Compensator, Plan
H608T	Trinocular, Polarizing with Red Compensator, Plan
B6-8041	Advanced Polarizing Filter Set with Red Compensator
97100	Urate Crystal Control Slide (Uric Acid Crystals)
B6-8010	Camera Adapter with T-Mount (for Trinocular models)
B6-8020	Video Adapter with C-Mount (for Trinocular models)
B6-8030	Phase Contrast Set, 10,40,100X objectives and Phase Condenser

Se habla español. Visítenos en el Internet:
www.unicosci.com/espanol
o llámenos por teléfono al 609-240-5507.



Semi-Plan Phase Contrast Set

This set works with any H600 Series microscope and provides full-phase contrast microscopy. Consists of:

- Semi-Plan Phase Objectives: 10x, 40x and 100x (oil)
- Turret Condenser, with "0" position for brightfield microscopy
- Centering Telescope to set up and align the condenser to objectives
- Extended centering thumbscrews (pair)
- Wooden, padded carrying and storage case

Item No.	Description
B6-8030	Semi-Plan Phase Contrast Set



Advanced Polarizer Filter Set

This set produces beautiful polarized imaging on your H600 series microscope. The set consists of three filters (including a Red Compensator), an add-on slot for the condenser to insert filter # 3 and a Urate Crystal Control Slide. Use the control slide to see what Urate (Uric Acid) crystals are supposed to look like and for setting up your microscope to view patient samples. Two of the filters (# 1 and 2) have rotational wheels for adjusting the polarizing filters for viewing birefringent crystals in lieu of a rotating stage. This accessory to the H600 series will make your microscope even more versatile.

Item No.	Description
B6-8042	Advanced Polarizer Filter Set

	H605	H605T	H606	H607	H607T	H608	H608T
Head	Binocular	Trinocular	Binocular	Binocular	Trinocular	Binocular	Trinocular
Eyepiece	10X WF(2)Hi-EP	10X WF(2)Hi-EP	10X WF(2)Hi-EP	10X WF(2)Hi-EP	10X WF(2)Hi-EP	10X WF(2)Hi-EP	10X WF(2)Hi-EP
Objectives	4,10,40,100X Phase Contrast	4,10,40,100X Phase Contrast	4,10,40,100X Epi-Fluorescence	4,10,40,50X Oil, 100X Plan Hematology	4,10,40,50X Oil, 100X Plan Hematology	4,10,40,100X Plan Polarizing	4,10,40,100X Plan Polarizing
Condenser	Phase	Phase	NA 1.25	NA 1.25	NA 1.25	NA 1.25	NA 1.25
Diaphragm	Iris	Iris	Iris	Iris	Iris	Iris	Iris
Stage	Mechanical	Mechanical	Mechanical	Mechanical	Mechanical	Mechanical	Mechanical
Illumination	Halogen Koehler - Iris	Halogen Koehler - Iris	Epi-Fluorescence Koehler - Iris	Halogen Koehler - Iris	Halogen Koehler - Iris	Halogen Koehler - Iris	Halogen Koehler - Iris
Bulb	6 Volt/20 Watt	6 Volt/20 Watt	6 Volt/100 Watt	6 Volt/20 Watt	6 Volt/20 Watt	6 Volt/20 Watt	6 Volt/20 Watt
Focusing	Coaxial	Coaxial	Coaxial	Coaxial	Coaxial	Coaxial	Coaxial

IP730 Series Microscopes

The IP730 from UNICO is designed to provide crisp, clear imaging on a versatile and ergonomic platform. Available with a variety of optics and configuration choices.

- **HEADS:** Binocular or Trinocular heads. Featuring 55 - 75 mm interpupillary distance adjustment. Both heads rotate 360°, one eye tube with diopter adjustment
- **EYEPIECES:** With 10X, 20mm FN Extra Widefield
- **STAGE:** Graduated Mechanical Stage with low-position coaxial X-Y controls. Ball bearing movement allows for smooth, precise adjustments. Stage size is 180 mm x 150 mm and the range of X-Y stage movement is 80 mm x 50 mm
- **OBJECTIVES:** All models are equipped with either achromatic or plan 4X, 10X, 40XR and 100XR (Oil) objectives
- **CONDENSER:** Focusable and centerable N.A. 1.25 Abbe condenser with graduated iris diaphragm and filter holder
- **ILLUMINATION:** Koehler illumination with field iris diaphragm featuring a 6 Volt / 20 Watt Halogen light source. Variable intensity rheostat wheel is located on the left side of the base
- **ELECTRICAL:** 110V- 60 Hz to 240V- 50 Hz
- Complete with dust cover, blue filter, two extra fuses and operation manual
- Five Year Limited Warranty, One Year on electrical system; excludes bulbs and fuses

Oversized stage,
180 mm x 150 mm

Item No.	Description
IP730	Advanced Binocular Microscope, Achromat
IP730SP	Advanced Binocular Microscope, Semi-Plan
IP730PL	Advanced Binocular Microscope, Plan
IP733	Advanced Trinocular Microscope, Achromat
IP733SP	Advanced Trinocular Microscope, Semi-Plan
IP733PL	Advanced Trinocular Microscope, Plan
IP735	Advanced Binocular Microscope, Plan Phase
IP735T	Advanced Trinocular Microscope, Plan Phase
IP750-8901	Metal Carrying Case for IP730 Series, Lockable
IP730-8030	Plan Phase Set with 10, 40, 100X Objectives
IP750-8020	C-Mount Video Adapter for IP730 and IP750 Series
IP750-6003	Dark Field Condenser for IP730 and IP750 Series
B6-7006	Halogen Bulb, 6 Volt / 20 Watt
B6-9005	Fuse, 50V, 1.5A



Hard-sided padded carry case
with lock and two keys



Trinocular head model shown
with camera installed



Close-up of graduated Iris
diaphragm, graduated Koehler
Illuminator diaphragm and
graduated fine focus control

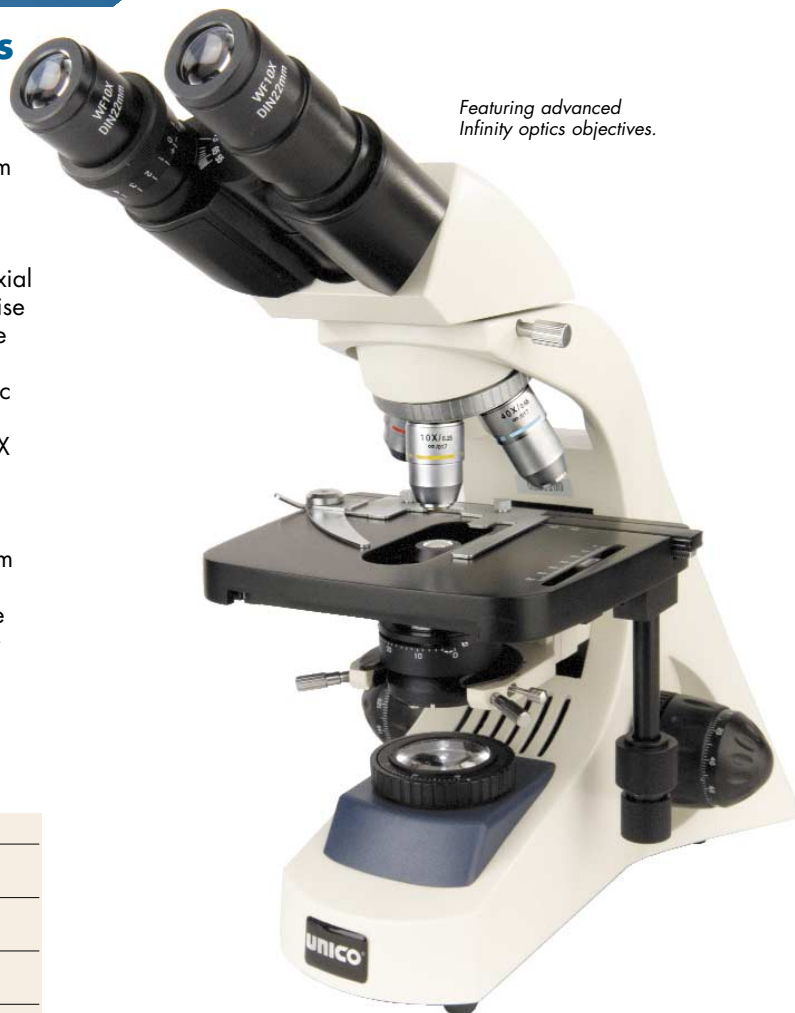
	IP730	IP730SP	IP730PL	IP733	IP733SP	IP733PL
Head	Binocular	Binocular	Binocular	Trinocular	Trinocular	Trinocular
Eyeiece	10X WF(2)Hi-EP	10X WF(2)Hi-EP	10X WF(2)Hi-EP	10X WF(2)Hi-EP	10X WF(2)Hi-EP	10X WF(2)Hi-EP
	Extra Widefield	Extra Widefield	Extra Widefield	Extra Widefield	Extra Widefield	Extra Widefield
Objectives	4, 10, 40, 100X	4, 10, 40, 100X	4, 10, 40, 100X	4, 10, 40, 100X	4, 10, 40, 100X	4, 10, 40, 100X
	Achromat	Semi-Plan	Plan	Achromat	Semi-Plan	Plan
Condenser	NA 1.25	NA 1.25	NA 1.25	NA 1.25	NA 1.25	NA 1.25
Diaphragm	Graduated Iris	Graduated Iris	Graduated Iris	Graduated Iris	Graduated Iris	Graduated Iris
Stage	Mechanical	Mechanical	Mechanical	Mechanical	Mechanical	Mechanical
Illumination	Halogen	Halogen	Halogen	Halogen	Halogen	Halogen
	Koehler - Iris	Koehler - Iris	Koehler - Iris	Koehler - Iris	Koehler - Iris	Koehler - Iris
Bulb	6 Volt/20 Watt	6 Volt/20 Watt	6 Volt/20 Watt	6 Volt/20 Watt	6 Volt/20 Watt	6 Volt/20 Watt
Focusing	Coaxial	Coaxial	Coaxial	Coaxial	Coaxial	Coaxial

IP750 Series Infinity Microscopes

The IP750 from UNICO is designed to provide crisp, clear imaging with high-end Infinity optics.

- **HEADS:** Binocular or Trinocular heads. Featuring 55 - 75 mm interpupillary distance adjustment. Both heads rotate 360°, one eye tube with diopter adjustment
- **EYEPIECES:** With 10X, 22mm FN Extra Widefield
- **STAGE:** Graduated Mechanical Stage with low-position coaxial X-Y controls. Ball bearing movement allows for smooth, precise adjustments. Stage size is 180 mm x 150 mm and the range of X-Y stage movement is 80 mm x 50 mm
- **OBJECTIVES:** All models are equipped with either achromatic or plan Infinity 4X, 10X, 40XR and 100XR (Oil) objectives. The Phase Contrast model has 4X Plan, 10X, 40X, and 100X Plan Phase objectives
- **CONDENSER:** Focusable and centerable N.A. 1.25 Abbe condenser with graduated iris diaphragm and filter holder
- **ILLUMINATION:** Koehler illumination with field iris diaphragm featuring a 6 Volt / 20 Watt Halogen light source. Variable intensity rheostat wheel is located on the left side of the base
- **ELECTRICAL:** 110V- 60 Hz to 240V- 50 Hz, universal power supply. The fuse rating is 250V 1.5A
- Complete with dust cover, blue filter, two extra fuses and operation manual
- Five Year Limited Warranty, One Year on electrical system; excludes bulbs and fuses

Featuring advanced Infinity optics objectives.



Item No.	Description
IP750	Advanced Binocular Infinity Microscope, Achromat
IP750PL	Advanced Binocular Infinity Microscope, Plan
IP753	Advanced Trinocular Infinity Microscope, Achromat
IP753PL	Advanced Trinocular Infinity Microscope, Plan
IP755	Advanced Binocular Infinity Plan Phase Microscope
IP755T	Advanced Trinocular Infinity Plan Phase Microscope
IP750-8901	Metal Carrying Case for IP730 Series, Lockable
IP750-8030	Infinity Plan Phase Set with 10, 40, 100X Objectives
IP750-8020	C-Mount Video Adapter for IP730 and IP750 Series
IP750-6003	Dark Field Condenser for IP730 and IP750 Series
B6-7006	Halogen Bulb, 6 Volt / 20 Watt
B6-9005	Fuse, 50V, 1.5A



Darkfield Condenser



IP750 Plan Phase Contrast Set



Turret Phase Contrast Condenser

	IP750	IP750PL	IP753	IP753PL	IP755	IP755T
Head	Binocular	Binocular	Trinocular	Trinocular	Binocular	Trinocular
Eyepiece	10X WF(2)Hi-EP Super Widefield	10X WF(2)Hi-EP Super Widefield	10X WF(2)Hi-EP Super Widefield	10X WF(2)Hi-EP Super Widefield	10X WF(2)Hi-EP Super Widefield	10X WF(2)Hi-EP Super Widefield
Objectives	4,10,40,100X Infinity Achromat	4,10,40,100X Infinity Plan	4,10,40,100X Infinity Achromat	4,10,40,100X Infinity Plan	4,10,40,100X Infinity Plan Phase	4,10,40,100X Infinity Plan Phase
Condenser	NA 1.25	NA 1.25	NA 1.25	NA 1.25	NA 1.25	NA 1.25
Diaphragm	Graduated Iris	Graduated Iris	Graduated Iris	Graduated Iris	Graduated Iris	Graduated Iris
Stage	Mechanical	Mechanical	Mechanical	Mechanical	Mechanical	Mechanical
Illumination	Halogen Koehler - Iris	Halogen Koehler - Iris	Halogen Koehler - Iris	Halogen Koehler - Iris	Halogen Koehler - Iris	Halogen Koehler - Iris
Bulb	6 Volt/20 Watt	6 Volt/20 Watt	6 Volt/20 Watt	6 Volt/20 Watt	6 Volt/20 Watt	6 Volt/20 Watt
Focusing	Coaxial	Coaxial	Coaxial	Coaxial	Coaxial	Coaxial



Microscopy Organizer Station

Finally, a way to organize all your microscopy accessories in one space-saving, convenient place! Organize slides and cover slips for easy access. Organize optical lens cleaners, tissues, and immersion oil. Features a Kimwipes® dispenser and places to store your stains and accessories. Made of sturdy 3/16" see-thru acrylic measuring 10.5"W x 4.5"D x 12"H.

Item No.	Description	UOM
91250	Microscopy Organizer Station	EA

Adjustable Arm Rests



These fully adjustable Arm Rests can be set as high as 3.5" or as low as 2.25" for maximum comfort. Reduces strain on forearms and wrists while reducing carpal tunnel and improving circulation. Completely washable, made of sealed polyurethane and can be decontaminated with standard lab disinfectants. Sold in pairs. Each arm rest measures 11.5" W x 6"D x 3.5"H.

Item No.	Description	UOM
93200	Adjustable Microscope Arm Rests	Pair

Slide Staining Rail



- Durable stainless steel construction
- 24" long rails hold up to 22 slides
- Fits sinks or trays up to 21" wide
- Stain, rinse, drain and dry quickly and easily
- Measures 24"W x 3.5"D x 1"H

Item No.	Description	UOM
91005	Slide Staining Rail	EA

Microscope Accessories



Objectives



Immersion Oil



Eyepieces



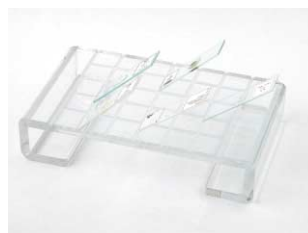
Halogen Bulb

Compound Microscope Accessories

Item No.	Description
B2-7003	Fluorescent Bulb, 7 Watt
B6-7006	Halogen Bulb, 6 Volt / 20 Watt
B6-7007	Halogen Bulb, 6 Volt / 30 Watt
B6-1401	10x Widefield Eyepiece
B6-1402	10x High-Eyepoint Widefield Eyepiece
B6-8901	Eyepiece Reticule, 0.1mm divisions
B6-8903	Stage Micrometer Slide, 0.1mm divisions
B6-2101	4x DIN Achromat Objective
B6-2102	10x DIN Achromat Objective
B6-2108	20x DIN Achromat Objective
B6-2103	40x DIN Achromat Objective (retractable)
B6-2107	60x DIN Achr. Objective (retractable, dry)
B6-2104	100x DIN Achromat Oil Immersion Object.
B6-2201	4x DIN Semi-Plan Objective
B6-2202	10x DIN Semi-Plan Objective
B6-2203	40x DIN Semi-Plan Objective (retractable)
B6-2204	100x DIN Semi-Plan Oil Immersion Object.
B6-2301	4x DIN Plan Objective
B6-2302	10x DIN Plan Objective
B6-2303	40x DIN Plan Objective (retractable)
B6-2308	50x DIN Plan Oil Immersion Objective
B6-2304	100x DIN Plan Oil Immersion Objective
B6-2422	10x DIN Semi-Plan Phase Objective
B6-2423	40x DIN Semi-Plan Phase Objective (R)
B6-2424	100x DIN Semi-Plan Phase Objective (Oil)
B6-9005	Fuse, 250 Volt, 1.5 Amp
B6-8001	Dust Cover
B6-8910	Optical Cleaning Kit
B6-8905	Immersion Oil, 7 ml, Type A
B6-6010	Blue (Daylight) Filter, 31.5mm

We inventory an extensive line of additional parts and accessories not shown here due to space limitations. If you do not see what you want or need, please contact us for more information.

Slide Drying Rack



- Dry and organize up to 30 slides at a time
- Space-saving design, small footprint
- Organize slides in rows, six rows of 5 slides
- Measures 8.5"W x 5"D x 2.2"H

Item No.	Description	UOM
91400	Slide Drying Rack	EA

IV950 Series Inverted Microscopes

UNICO IV950 Series Inverted Microscopes are designed for Tissue Culture, Cell Biology, Microbiology and more. Featuring Binocular or Trinocular heads and Long Working Distance (LWD) objectives in your choice of Plan Achromat or Plan Phase Contrast. The over-sized stage offers precise and smooth ball-bearing movement, for clear, steady viewing while scanning the field of view. Precise fine focus controls move in 0.002 mm scale value increments. Phase Contrast models include a Centering Telescope.

LWD Plan Objectives Available:

Plan Achromat Brightfield: 4x, 10x, 20x and 40x

Plan Phase Contrast: 10x, 20x, and 40x

Specifications:

- Inverted microscope, 4-hole nosepiece
- Binocular head inclined 45°, vertical Trinocular
- Interpupillary Distance range: 50 -75 mm
- Bright 12 Volt / 30 Watt Halogen Bulb
- Intensity Rheostat for lighting control
- Plan Achromat, or Plan Phase Objectives
- 10x Extra-Widefield eyepieces, paired
- Left eyetube with Diopter focus control
- Optional cross-hair Reticule, 0.1mm scale
- Stage Size: 242 mm x 172 mm
- Graduated Mechanical Stage, low position controls
- Center Stage ring diameter is 110 mm
- Centering Telescope included with Phase models
- Filters: Blue, Green, Yellow and Frosted



Innovative and ergonomic design makes extended viewing comfortable.



Trinocular head



Close-up of the inverted nosepiece and objectives.

Item No.	Description
IV951	Inverted Binocular, Plan Brightfield, 4x, 10x, 20x, 40x
IV951T	Inverted Trinocular, Plan Brightfield, 4x, 10x, 20x, 40x
IV952	Inverted Binocular, Brightfield Plan, 4x, & 10x, Phase 20x and 40x
IV952T	Inverted Trinocular, Brightfield Plan, 4x, & 10x, Phase 20x and 40x
IV953	Inverted Binocular, Brightfield Plan, 4x, Phase 10x, 20x and 40x
IV953T	Inverted Trinocular, Brightfield Plan, 4x, & Phase 10x, 20x and 40x
IV950-7007	12 Volt / 30 Watt Halogen Bulb, 2 pin
IV950-8020	C-Mount Camera Adapter for Trinocular models
IV950-1501	10x Widefield Eyepiece, FN 20, single
IV950-1502	10x Widefield Eyepiece, FN 23, single
IV950-8901	Cross-Hair Reticule with 0.1 mm scale

	IV951	IV951T	IV952	IV952T	IV953	IV953T
Head	Binocular	Trinocular	Binocular	Trinocular	Binocular	Trinocular
Eyepiece	10X WF(2)	10X WF(2)	10X WF(2) and centering eyepiece	10X WF(2) and centering eyepiece	10X WF(2) and centering eyepiece	10X WF(2) and centering eyepiece
Brightfield Objectives	4,10,20,40X Plan	4,10,20,40X Plan	4,10X Plan	4,10X Plan	4X Plan	4X Plan
Phase Objectives	None	None	20,40X Plan Phase	20,40X Plan Phase	10,20,40X Plan Phase	10,20,40X Plan Phase
Condenser	NA 0.65	NA 0.65	NA 0.65	NA 0.65	NA 0.65	NA 0.65
Diaphragm	Iris	Iris	Iris	Iris	Iris	Iris
Stage	Mechanical	Mechanical	Mechanical	Mechanical	Mechanical	Mechanical
Illumination	Halogen	Halogen	Halogen	Halogen	Halogen	Halogen
Bulb	12 Volt/30 Watt	12 Volt/30 Watt	12 Volt/30 Watt	12 Volt/30 Watt	12 Volt/30 Watt	12 Volt/30 Watt
Focusing	Coaxial	Coaxial	Coaxial	Coaxial	Coaxial	Coaxial

ZM180 Zoom Stereomicroscopes

ZM180 Series Stereomicroscopes provide sharp 3-D imaging.

Model ZM181HF

The ZM180 Series Zoom Stereomicroscopes offer smooth, continuous zoom magnification, through the entire 7x – 45x range. Available with a variety of stand and illumination choices; the standard optical configurations give 7 - 45x with 10x eyepieces. However, the magnification range can vary from 2.1x to 225x depending on the combination of eyepieces and auxiliary objective lenses you select.

We have a ZM Zoom Stereo for you! Available with a wide variety optical, stand and illumination options we have a model for your application. For temperature sensitive work such as fertility or insemination applications, we recommend models with cool-burning fluorescent bottom illumination to eliminate overheating your specimens. As you review the following selections keep in mind the range of eyepieces and auxiliary objective lenses available:

ZM180 Series Standard Features:

- Continuous Zoom Binocular or Trinocular Heads, 7 – 45x
- Parfocal Zoom stays in focus over entire zoom range
- Superior optical design with crisp resolution
- Heads rotate 360°, and lock in-place with thumb screws
- Eyepieces are inclined at a 45° angle for viewing comfort
- Dual-Diopter, independent focus controls on each eyetube
- Interpupillary Distance Adjustment of 55 mm to 75 mm
- Working distance of 108 mm (with standard optical configuration)
- All metal head, stand and body construction

ZM180 Series Options and Accessories:

- Extra-Widefield Eyepieces: 10x, 15x, 20x and 25x
- Auxiliary Objectives: 0.3x, 0.5x, 0.75, 1.5x and 2x
- Magnification range of: 2.1x to 225x depending on optics selected
- Stand Selection: Solid Arm, Post Mount, or Boom Arm
- Illumination choices: Halogen, Fluorescent and Fiber Optics
- Camera Adapters for C-Mount Video or SLR cameras
- Frosted, Clear and Black/White Stage Plates

ZM's shown with extended Pillar/Post mount.

Model ZM181

Item No.	Description	Stand	Illumination
ZM181	Binocular Zoom Stereo	Pillar/Post	None
ZM181T	Trinocular Zoom Stereo	Pillar/Post	None
ZM181HF	Binocular Zoom Stereo	Pillar/Post	Halogen (top) Fluorescent (bottom)
ZM181HFT	Trinocular Zoom Stereo	Pillar/Post	Halogen (top) Fluorescent (bottom)



Shown with Dual Chrome Gooseneck Fiber Optic Light Guides

Fiber Optic Illuminator

Illuminator Accessories for the ZM Series

Item No.	Description
D4-7004	Fiber Optic Light Power Supply, 115 Volt / 100 Watt
D4-7002	Dual Chrome Gooseneck Fiber Optic Light Guides (requires D4-7004)
D4-7003	Fiber Optic Ring Light Guide (requires D4-7004)
D4-7030	Fluorescent Ring Light with adapter for ZM Series
D4-7011	Ring Lamp Bulb, fluorescent
D4-7013	Halogen Bulb, 6 Volt / 20 Watt
D4-7014	Fluorescent Bulb, 6 Volt / 5 Watt

Zoom Stereomicroscopes



Model ZM187T with Boom Stand and Focusing Mount

ZM187T shown with Trinocular Head above. We recommend using our Fiber Optic Illuminators and Light Guides with all ZM186 and ZM187 models.

Did you know? Your ZM can have a magnification range of 2.1x to 225x depending on the lens configuration that you select. Call us for details.



Model ZM186 with Boom Stand



ZM184 with Trinocular Head and Extender Arm stand.

Model ZM184HFT

Item No.	Description	Stand	Illumination
ZM184HF	Binocular Zoom Stereo	Extender Arm	Halogen (top) Fluorescent (bottom)
ZM184HFT	Trinocular Zoom Stereo	Extender Arm	Halogen (top) Fluorescent (bottom)
ZM186	Binocular Zoom Stereo	Boom Arm	None
ZM186T	Trinocular Zoom Stereo	Boom Arm	None
ZM187	Binocular Zoom Stereo	Boom w/Focusing Mount	None
ZM187T	Trinocular Zoom Stereo	Boom w/Focusing Mount	None

Se habla español. Visítenos en el Internet:
www.unicosci.com/espanol
o llámenos por teléfono al 609-240-5507.

Optical Accessories for the ZM Series

Item No.	Description
D4-1001	10x Widefield Eyepiece, each
D4-1002	15x Widefield Eyepiece, each
D4-1003	20x Widefield Eyepiece, each
D4-1004	25x Widefield Eyepiece, each
D4-2001	2x Auxiliary Objective
D4-2002	1.5x Auxiliary Objective
D4-2003	0.75x Auxiliary Objective
D4-2004	0.5x Auxiliary Objective
D4-2005	0.3x Auxiliary Objective
D4-8020	Video Adapter with C-Mount, adjustable
D4-8010	SLR Camera Adapter (requires T-Mount)

Colpo-Master™ I Colposcope with Suspension Arm

UNICO is proud to introduce the new Colpo-Master™ line of Colposcopes with incredible optical clarity you have to see to believe!

Colpo-Master™ I features smooth, continuous zoom 4 – 27x magnification with 20x eyepieces and sharp focus for 3-D imaging. Available with Binocular or video-ready Trinocular heads (see page 28) with 298mm working distance. The field of view (FOV) ranges from 58.5mm at 4x to 8.5mm at 27x. All models with your choice of 3 or 5 leg sturdy mobile bases.

Designed with your viewing comfort in mind; each model has dual diopter adjustments to independently adjust the focus of both Left and Right eyepieces to eliminate eyestrain.

Colpo-Master™ I's Suspension Arm is rock-steady. To make head positioning easy it comes with locking casters and stainless steel handlebars, standard.

A super-bright 150W Quartz Halogen bulb powers the fiber optic illumination, complete with variable intensity rheostat providing ample light for any application. Includes built-in green filter.

Complete with dust cover, spare bulb, power cord, manual, tool kit and 7 Year Limited Warranty, 1 year on electrical system (excludes bulbs and fuses).

Optional accessories are available - please contact UNICO for additional information.

See detailed specifications along with parts and accessories on page 28.

Low center of gravity increases stability, while EZ-Roll locking casters provide smooth gliding movement between exam rooms.

Item No.	Description
CS-103	Colpo-Master™ I Colposcope, 3 Leg
CS-103T	Colpo-Master™ I Trinocular Colposcope, 3 Leg
CS-105	Colpo-Master™ I, Colposcope, 5 Leg
CS-105T	Colpo-Master™ I Trinocular Colposcope, 5 Leg
CS-9001	Replacement Halogen Bulb, 150 Watt

Colpo-Master is a registered Trade Mark of United Products and Instruments, Inc; DBA UNICO

Colpo-Master™ II Center Post Mount Colposcope

Colpo-Master™ II is a compact Center-Post Colposcope with unique, continuous zoom magnification and sharp focusing for crisp 3-D imaging.

- **HEAD:** Full continuous zoom magnification range: 4 – 27x with 20x eyepieces. Binocular or video-ready Trinocular heads, with 298mm working distance. The field of view (FOV) ranges from 58.5mm at 4x to 8.5mm at 27x
- Dual diopters allow user to independently focus each eyepiece to adjust for the natural vision differential between eyes for viewing comfort
- Sturdy, 5-legged, easy-to-maneuver base slides in and under exam tables for optimal positioning
- A super-bright 150W Quartz Halogen bulb powers the fiber optic illumination, complete with variable intensity rheostat providing ample light for any application
- Includes built-in green filter
- Adjustable height center post with smooth suspension system
- S-Video and digital camera options available, trinocular version with built-in C-Mount Camera adapter

Complete with dust cover, spare bulb, power cord, manual, tool kit and 7 Year Limited Warranty, 1 year on electrical system (excludes bulbs and fuses). Optional accessories are available - please contact UNICO for additional information.

Item No.	Description
CS-205	Colpo-Master™ II, Center Post Mount Colposcope
CS-205T	Colpo-Master™ II Post Mount, Trinocular Colposcope
CS-9001	Replacement Halogen Bulb, 150 Watt

Please see page 28 for a listing of parts and accessories to complement your colposcope.





Colpo-Master™ Video-Ready Trinocular Head

A close-up view of our Trinocular head with C-mount camera adapter (shown with an S-Video camera attached). When you buy a trinocular head model, it comes complete with the C-Mount adapter already installed. This is an industry standard mount and will accept most S-Video and Digital cameras, as long as they also have a C-mount. UNICO offers both S-Video and Digital Camera options, please see the list on this page for camera options, or contact UNICO for details.

UNICO Colpo-Master™ Colposcopes Parts and Accessories

Item No.	Description
CS-3101	10X Widefield eyepiece, high eyepoint, single
CS-3101N	10X High eyepoint eyepiece with adjustable diopter, single, (for use with CS-3001N & CS-3002N zoom bodies)
CS-3102N	15X High eyepoint eyepiece with adjustable diopter, single, (for use with CS-3001N & CS-3002N zoom bodies)
CS-3103	20X Widefield eyepiece, high eyepoint, single
CS-3104N	20X High eyepoint eyepiece with adjustable diopter, single, (for use with CS-3001N & CS-3002N zoom bodies)
CS-3001	Binocular zoom stereo body 0.67x - 4.5x, 45 degree angle eyepiece tube for comfortable observation.
CS-3002	Trinocular zoom stereo body 0.67x - 4.5x, 45 degree angle eyepiece tube for comfortable observation.
CS-3001N	Binocular zoom stereo body without diopter, 0.67 - 4.5x (requires eyepieces with built-in diopter)
CS-3002N	Trinocular zoom stereo body with C-Mount adapter, without diopter, 0.67 - 4.5x (requires eyepieces with built-in diopter)
CS-3201	0.3x Reducing Objective lens
CS-3202N	0.4x Reducing Objective Lens (for use with CS-3001N & CS-3002N zoom bodies)
CS-1901	Stainless Steel Handle Bars (pair) for CS-103, CS-103T, CS-105 and CS-105T
CS-9001	Halogen light bulb for both Colpo-Master colposcopes, 150 Watts/ 21 Volts
CS-9002	Fuse 2AMP, 250V for Colpo-Master colposcopes
CS-9003	Power cord, 9', Grounded plug
CS-1902	Full Dust Cover for CS-103, CS-103T, CS-105 and CS-105T
CS-2902	Full dust cover for CS-205 and CS-205T
CS-9004	Tool Kit for Colpo-Master colposcopes includes Allen Key Set
CS-8020	C-mount adapter for CS-103T, CS-105T and CS-205T
CS-8020N	C-mount adapter for CS-103T, CS-105T and CS-205T (with CS-3002N trinocular body)
CS-8021	S-Video camera with C-mount adapter for CS-103T, CS-105T and CS-205T
CS-8022	Video monitor, 15" Flat Screen
CS-8023	Video image grabber for Laptop computer
CS-8024	Video image grabber for Desktop computer

Colpo-Master is a registered Trade Mark of United Products and Instruments, Inc; DBA UNICO

UNICO Colpo-Master™ Colposcope Specifications Data Table

	Colpo-Master I (see page 26)	Colpo-Master II (see page 27)
Models	CS-103, CS-103T, CS-105, CS-105T	CS-205, CS-205T
Heads	Binocular or Video-Ready Trinocular with C-Mount	Binocular or Video-Ready Trinocular with C-Mount
Type of Stands	Flex-arm suspension stand (3 and 5 legged bases)	Center Post Stand (5 legged base)
Optical System	Continuous Zoom with zoom ratio 1:6.7 (0.67x-4.5x)	Continuous Zoom with zoom ratio 1:6.7 (0.67x-4.5x)
Magnification Range	3.9x - 27x	3.9x - 27x
Eyepieces	20x Extra-widefield, 11.5mm, with Diopter	20x Extra-widefield, 11.5mm, with Diopter
Field of View (FOV)	58.5 mm at 3.9x to 8.5 mm at 27x	58.5 mm at 3.9x to 8.5 mm at 27x
Working Distance	298 mm (11.75")	298 mm (11.75")
Inclination of Head	45-90 degrees, adjustable	45-90 degrees, adjustable
Interpupillary Distance	55mm - 75mm	55mm - 75mm
Power Supply	120 Volt - 50/60 Hz, 1.5 Amps	120 Volt - 50/60 Hz, 1.5 Amps
Bulb (lamp)	21 Volt / 150 Watt, Quartz Halogen Bulb	21 Volt / 150 Watt, Quartz Halogen Bulb
Fuse, Rating	2 Amps, 250 Volt Fast Blow Fuse	2 Amps, 250 Volt Fast Blow Fuse
Power Cord	Grounded 3-wire, 10 foot length	Grounded 3-wire, 10 foot length
Overall Height	63"- 36" (1600 mm - 915 mm)	53"- 44" (1345 mm - 1118 mm), Adjustable Ht.
Base Radius	16-1/2" (420 mm), 3 or 5 legged base	24" (610 mm), 5 legged base
Overall Radius	30" (780 mm)	24" (610 mm)
Weight (Total)	85 lbs. Fully assembled	33 lbs. Fully assembled
Shipping Weight	Three boxes, 125 Lbs. total	Three boxes, 65 Lbs. total

Glove and Paper Towel Dispensers

Glove Box Dispensers



22150 Glove Box Dispenser, 1 Horizontal / 1 Vertical



22250 Glove Box Dispenser, 2 Horizontal



22350 Glove Box Dispenser, 3 Horizontal

Always searching for your gloves? Mount a dispenser on the wall; your gloves will be in the same place every time and free-up benchtop space! Select 1, 2 or 3 box holders. Made of heavy duty 3/16" thick acrylic for long life.

- Benchtop, or wall mount to save benchtop space
- Keeps gloves in the same place, easy to find
- Single, Double, or Triple: horizontal or vertical mounts
- Fits any size/brand glove box
- Includes mounting hardware
- Single box dispenser can be mounted horizontally or vertically



Our vertical dispensers can also be mounted horizontally, as shown



22272 Glove Box Dispenser, 2 Vertical



22373 Glove Box Dispenser, 3 Vertical

Item No.	Description	UOM	Size
22150	Glove Box Dispenser, 1 Horizontal / 1 Vertical	EA	11"W x 4.25"D x 6"H
22250	Glove Box Dispenser, 2 Horizontal	EA	11"W x 4.25"D x 10"H
22272	Glove Box Dispenser, 2 Vertical	EA	5.5"W x 4"D x 20"H
22373	Glove Box Dispenser, 3 Vertical	EA	5.5"W x 4"D x 30"H
22350	Glove Box Dispenser, 3 Horizontal	EA	11"W x 4.25"D x 16"H

Towel Dispensers



20500 Small Towel Dispenser

Keep your towels organized, dry and safe from spills in our handy dispensers. Take only one towel at a time, or a handful! Easy access when wearing gloves. Made of sturdy 3/16" acrylic.

Item No.	Description	UOM	Size
20500	Towel Dispenser, Small	EA	10.5"W x 4"D x 6.5"H
20600	Towel Dispenser, Large	EA	11"W x 4.5"D x 15.25"H



20600 Large Towel Dispenser



Combination Glove Box and Paper Towel Dispenser

Two-in-One! This versatile dispenser holds gloves and paper towels in one convenient place. We recommend gloves on top and towels on the bottom (to prevent dripping on the gloves with wet hands), but it's your choice - either slot can be used for gloves or towels. Made of sturdy 3/16" acrylic.

Item No.	Description	Size
22650	Glove/Paper Towel Dispenser	11" L x 4" D x 16.75" H

Culture Plate Rack and Caddy



Organize, batch, transport and incubate, all with one rack! our Stainless Steel wire racks are stackable and autoclavable. Each rack holds up to 48 culture plates. Stainless steel rack caddy safely transports two Plate Racks side by side and is also stackable for more efficient use of incubator space.

Item No.	Description	Size
44510	Culture Plate Rack	12.5"W x 5"D x 9.5"H
44525	Culture Plate Rack Caddy	13"W x 9.5"D x 11.25"H

4-Drawer Organizers

48510



48512

48513

Organize your work with these handy desktop units. Select 8" or 12" width, each with 4 drawers so you can see-through. Each drawer features movable dividers to customize the space to fit your needs. Great for storing controls, calibrators or reagents in and out of the refrigerator.

- 4 drawers to store and organize your supply
- Movable divider in every drawer for custom fit
- Optional tray to fit 8" and 12" organizers together
- Constructed of durable 3/16" acrylic

Item No.	Description	Size
48510	Organizer, 4-drawer, 8" wide	8"W x 5.25"D x 8.5"H
48512	Organizer, 4-drawer, 12" wide	12"W x 5.25"D x 8.5"H
48513	Tray to hold 48510 and 48512	20"W x 5.25"D x 1.5"H
48514	Combo of 8", 12" 4-drawer and tray	20"W x 5.25"D x 8.5"H

Kimwipes® Dispensers



The versatile large dispenser holds large or extra large Kimwipes® boxes, or 3 small boxes lined up together.

- Free up countertop space by wall-mounting Kimwipes
- Small and Large box dispensers available
- Includes mounting hardware
- Made of sturdy 3/16" acrylic

Item No.	Description	Size
20650	Dispenser, Small Box	5.25"W x 3"D x 4.75"H
20655	Dispenser, Large Box	15"W x 5.5"D x 4"H

Biohazard Shield



Help prevent exposure to you and your staff from potentially harmful materials by splash or spill. Constructed of heavy 3/16" acrylic; our shields provide low cost - high value addition to your lab or practice. Use when opening urines, blood samples, or while pipeting and transferring hazardous liquids.

Item No.	Description	Size
11410	Biohazard Shield	11.5"W x 7.5"D x 15"H

Multi-Task Organizer



Have everything you need at your fingertips with this useful organizer! Features dispensers for gloves, Kimwipes®, Parafilm® roll stock dispenser and more.

- Two storage compartments with hinged lids
- Dispenses roll stock, Parafilm® or labels
- Kimwipes® and glove dispensers
- Stores backup boxes of gloves and Kimwipes® for added convenience
- Constructed of durable 3/16" acrylic

Item No.	Description	Size
49500	Multitask Organizer	11.5"W x 7"D x 16.5"H

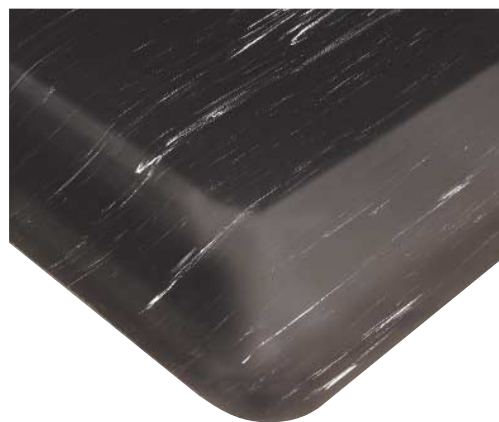


Chart Holder

- Perfect for wall mounting inside/outside exam rooms
- Great for storing and retrieving instrument QA and QC reports
- Provides easy access to equipment log entries in the lab
- Separate completed documents for filing or "send-outs"
- Made of heavy gauge 3/16" acrylic materials

Item No.	Description	Size
30100	Chart Holder - Wall mount	12" x 10" x 2"

Anti-Fatigue Floor Mats



Tired of sore legs and feet? We have an answer! Try our Anti-Fatigue mats; you will be glad you did!

- Two sizes to fit your space requirements
- Feel better at the end of your shift!
- Comfortable 1/2" thick mats

Item No.	Description	Size
84510	2' x 3' Black Mat	2' x 3'
84515	3' x 5' Black Mat	3' x 5'

UNICO®



Contact Us:

UNICO
United Products and Instruments, Inc.
182 Ridge Road, Suite E
Dayton, New Jersey 08810
U.S.A.

Toll Free phone: 800-588-9776 Direct Dialing: 732-274-1155 Fax: 732-274-1151
E-mail: info@unicosci.com Website: www.unicosci.com

Espanol Direct Dial: 609-240-5507 E-mail: Walter@unicosci.com